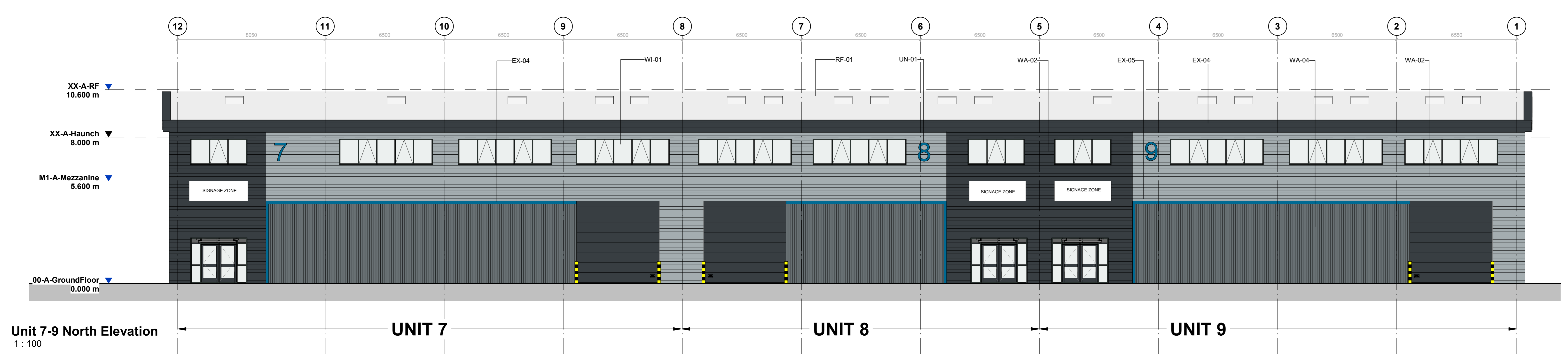
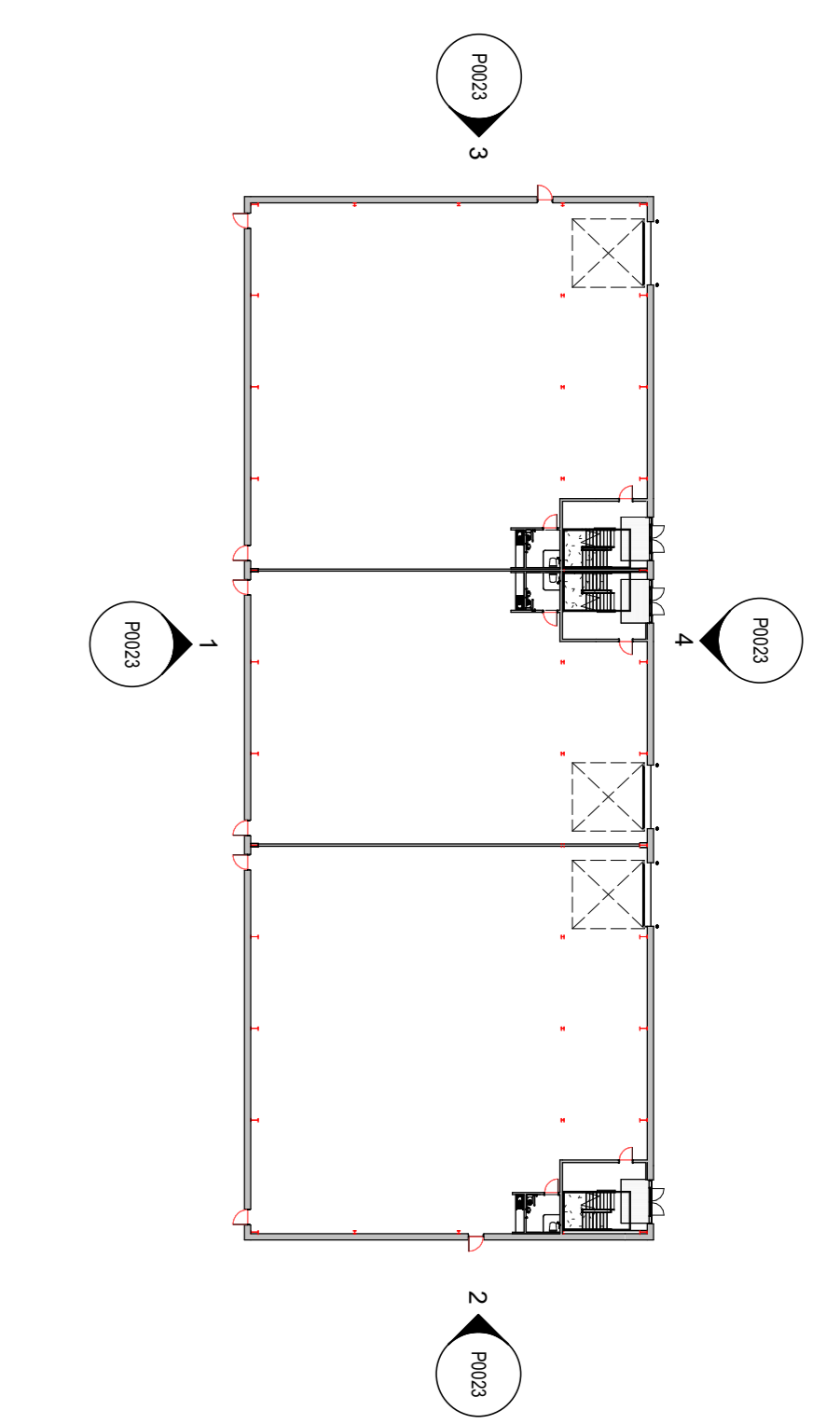
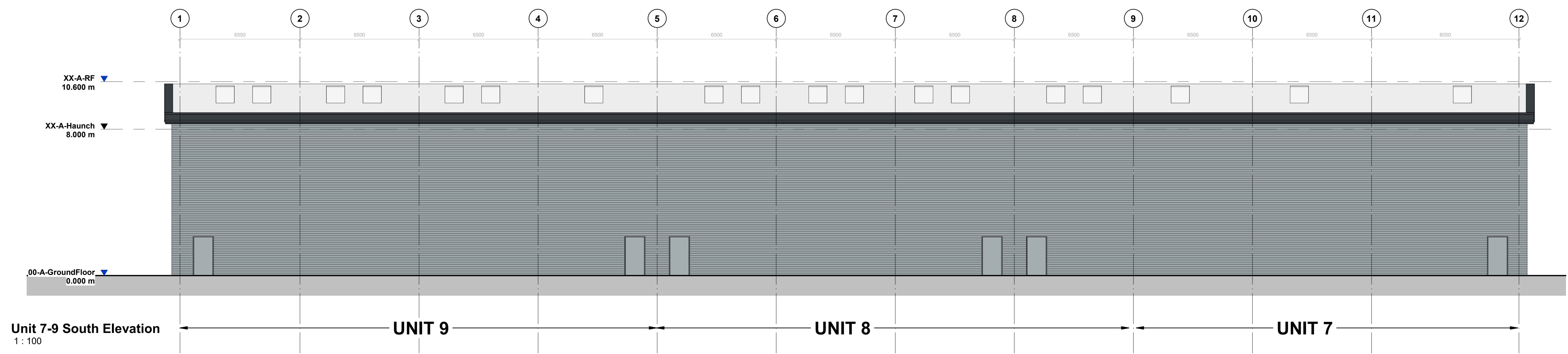
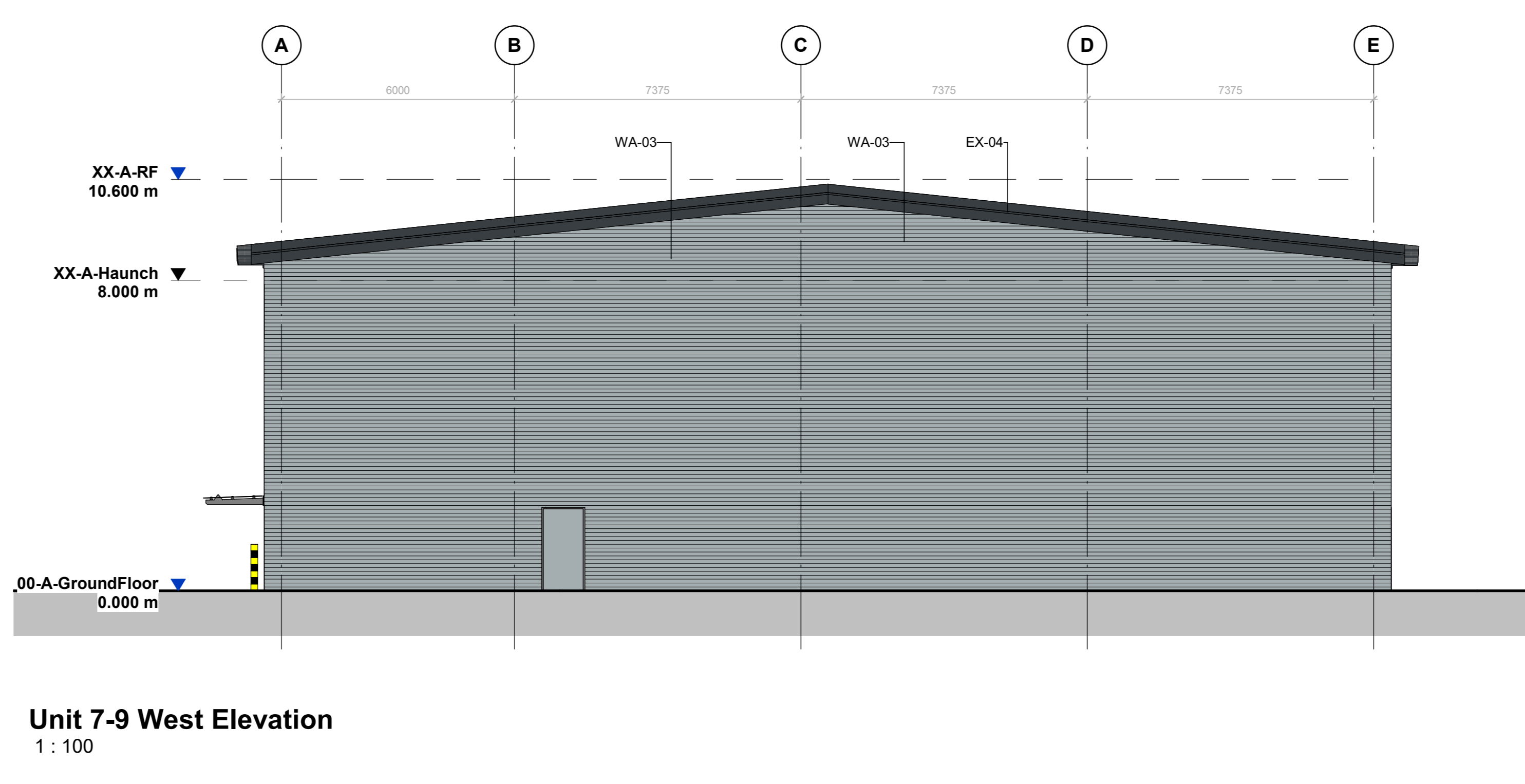


Dimensions are all in millimetres, unless stated otherwise.
 It is the recipient's responsibility to print this document to the correct scale.
 All the relevant drawings and specifications should be read in conjunction with this drawing.



Keynote Legend	
Key Value	Keynote Text
EX-04	All guttering and rainwater pipes to be RAL 7016
EX-05	All flashing to be Anthracite (RAL 7016). Feature flashing to be Solent Blue RAL 240 40 40.
RF-01	Trapezoidal profiled roof cladding panels. Finish: Tata Colorcoat HPS200 Ultra. Colour: Goosewing Grey (RAL 7038).
UN-01	Unit Numbering to be Anthracite Blue (RAL 240 40 40)
WA-01	Horizontally laid Euroclad Elite Sylem 58 cladding panel. Finish: Tata Colorcoat HPS200 Ultra. Colour: Gull Grey (RAL 240 80 05)
WA-02	Horizontally laid Euroclad Elite Sylem 58 cladding panel. Finish: Tata Colorcoat HPS200 Ultra. Colour: Anthracite Grey (RAL 7016)
WA-03	Horizontally laid trapezoidal profiled cladding panel system. Finish: Tata Colorcoat HPS200 Ultra. Colour: Gull Grey (RAL 240 80 05)
WA-04	Vertically laid trapezoidal profiled cladding panel system. Finish: Tata Colorcoat HPS200 Ultra. Colour: Merlin Grey (RAL 180 40 05)
WI-01	Thermally broken polyester powder coated aluminium windows. Finish: Polyester powder coated. Glazing: Grey tinted. Frame Colour: Anthracite (RAL 7016)



D	Logo revised	LP	JC	10/05/22
E	Amendments made to grid dimensions	LP	JC	28/04/22
B	Amendments made to capture client comments	LP	JC	22/03/22
A	Initial Issue	LP	JC	17/02/22

Old Walsall Road,
 Hamstead
 Unit 7-9 Elevations

PLANNING
 THIS DRAWING IS FOR INFORMATION ONLY AND SHOULD NOT BE USED FOR ANY OTHER PURPOSE.

3rd Floor, Manchester Club, 81 King Street, Manchester, M2 4AH
 +44 (0)1614155992 | info@umcarchitects.com

Project Status: Detail Design
 Sustainability / Status: 00
 Drawn / Checked: LP/JC
 Date: 14/03/2022
 Scale: As Indicated @ A0
 UMC Project Number: Drawing no: Revision:
 21146 P0023 D