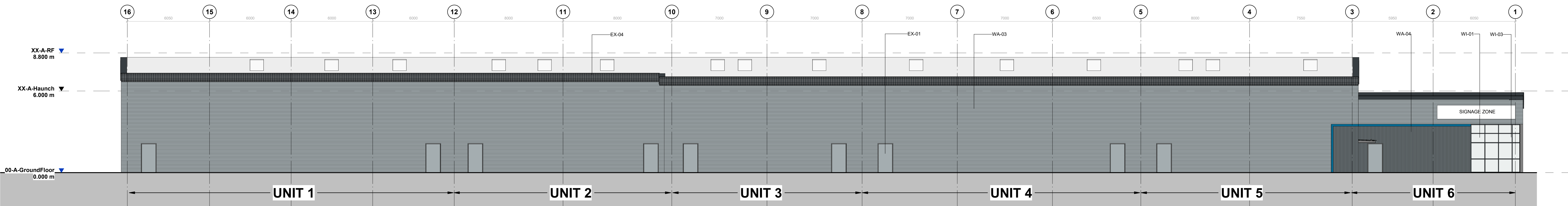


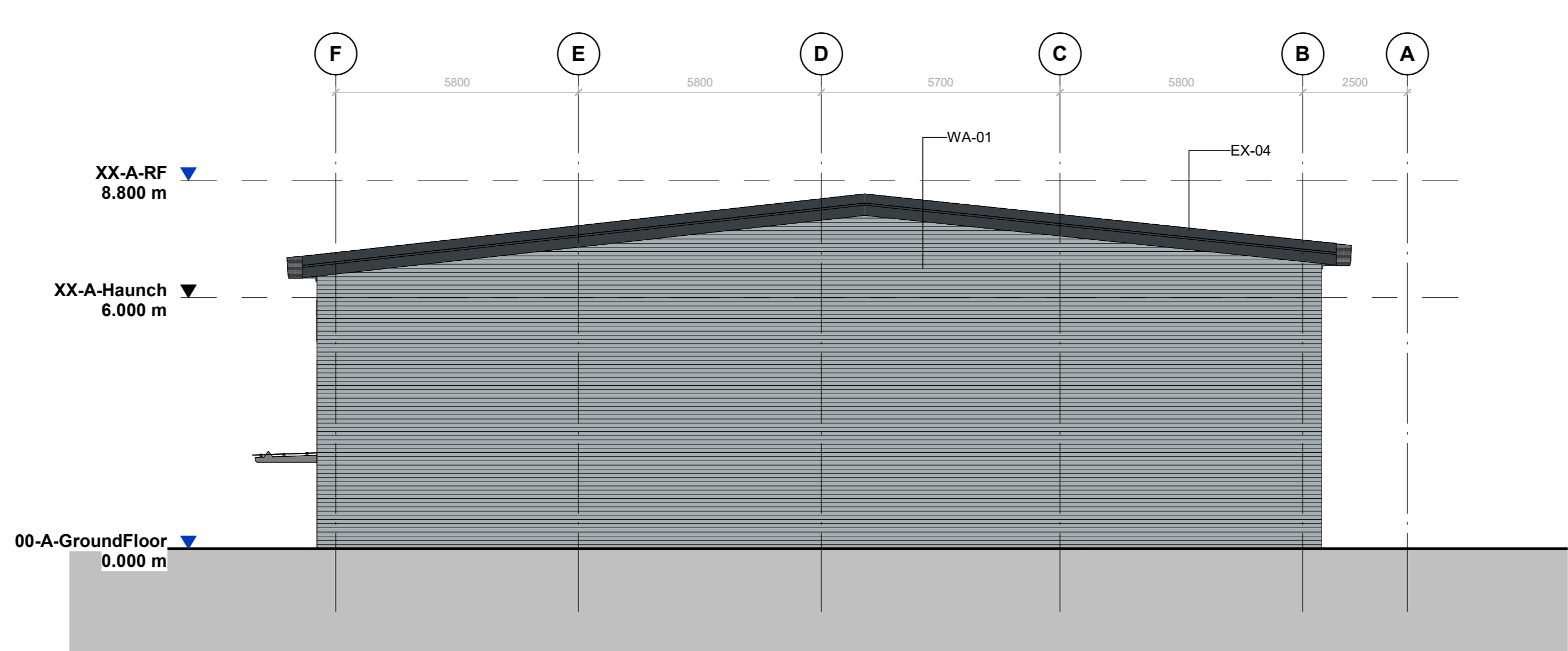
Unit 1-6 South Elevation  
 1 : 100



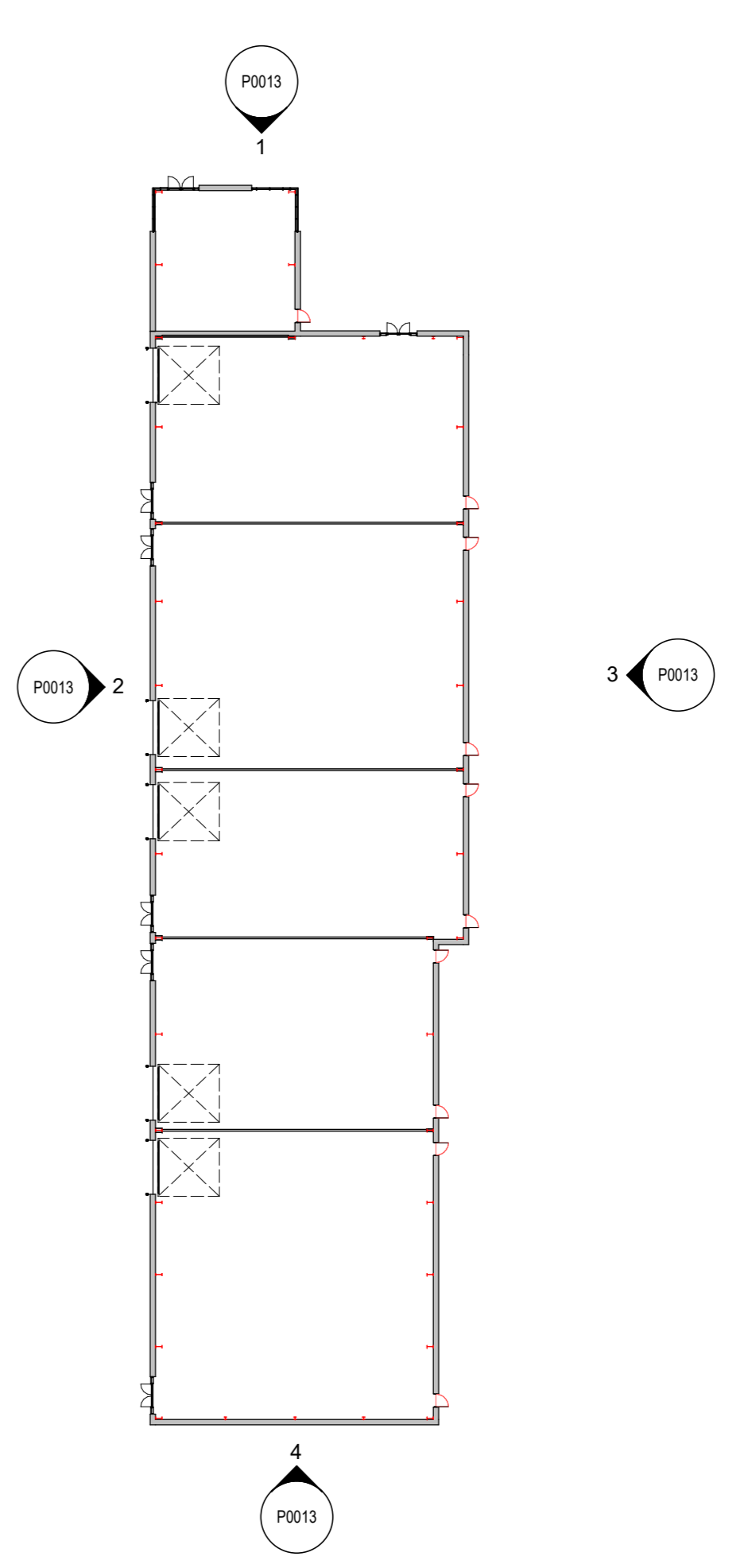
Unit 1-6 North Elevation  
 1 : 100



Unit 1-6 East Elevation  
 1 : 100



Unit 1-6 West Elevation  
 1 : 100



Elevation Key	
Key Value	Keynote Text
CA-01	Glazed canopy to project 1.2m on support rods. Glazing: Grey tinted. Frame Colour: Anthracite (RAL 7016)
CA-02	Glazed canopy to project 1.2m on support rods. Glazing: Grey tinted. Frame Colour: Iron Grey (RAL 7011)
EX-01	Steel insulated security door & frame. Finish: Polyester powder coated. Colour: To match adjacent cladding.
EX-04	All guttering and rainwater pipes to be RAL 7016
EX-05	All flashing to be Anthracite (RAL 7016). Feature flashing to be Solent Blue RAL 240 40 40.
LD-01	Aspa Alloy OH1042P sectional doors with level access to be electrically operated with manual override. Finish: Polyester powder coated. Colour: Anthracite RAL 7016 (External) RAL 9002 (Internal)
RF-01	Trapezoidal profiled roof cladding panels. Finish: Tata Colorcoat HPS200 Ultra. Colour: Goosewing Grey (RAL 7038)
WA-01	Horizontally laid Euroclad Elite Sylem 58 cladding panel. Finish: Tata Colorcoat HPS200 Ultra. Colour: Gull Grey (RAL 240 80 05)
WA-02	Horizontally laid Euroclad Elite Sylem 58 cladding panel. Finish: Tata Colorcoat HPS200 Ultra. Colour: Anthracite Grey (RAL 7016)
WA-03	Horizontally laid trapezoidal profiled cladding panel system. Finish: Tata Colorcoat HPS200 Ultra. Colour: Gull Grey (RAL 240 80 05)
WA-04	Vertically laid trapezoidal profiled cladding panel system. Finish: Tata Colorcoat HPS200 Ultra. Colour: Merlin Grey (RAL 180 40 05)
WI-01	Thermally broken polyester powder coated aluminium windows. Finish: Polyester powder coated. Glazing: Grey tinted. Frame Colour: Anthracite (RAL 7016)
WI-03	Thermally broken polyester powder coated aluminium windows. Internally beaded anti-bandit glazing. Finish: Polyester powder coated. Glazing: Grey tinted. Frame Colour: Iron Grey (RAL 7011)

1m SCALE 1:100

C Logo revised LP JC 11/05/22  
 B Amendments made etc capture client comments LP JC 22/03/22  
 A Initial issue LP JC 17/03/22

rev | amendments | by | ckd | date

Old Walsall Road,  
 Hamstead  
 Unit 1-6 Elevations

**PLANNING**  
 AND SHOULD NOT BE USED FOR ANY OTHER PURPOSE

**IPIF**

**umc architects**

3rd Floor, Manchester Club, 81 King Street, Manchester, M2 4AH  
 +44 (0)161415090 | info@umcarcitects.com

Project Status: Planning  
 Sustainability / Status: SD  
 Drawn / Checked: LP/JC  
 Date: 14/03/2022  
 Scale: As indicated @ A0  
 UMC Project Number: 21146 Drawing No: P0013 Revision: C